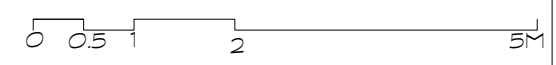


METRAJE

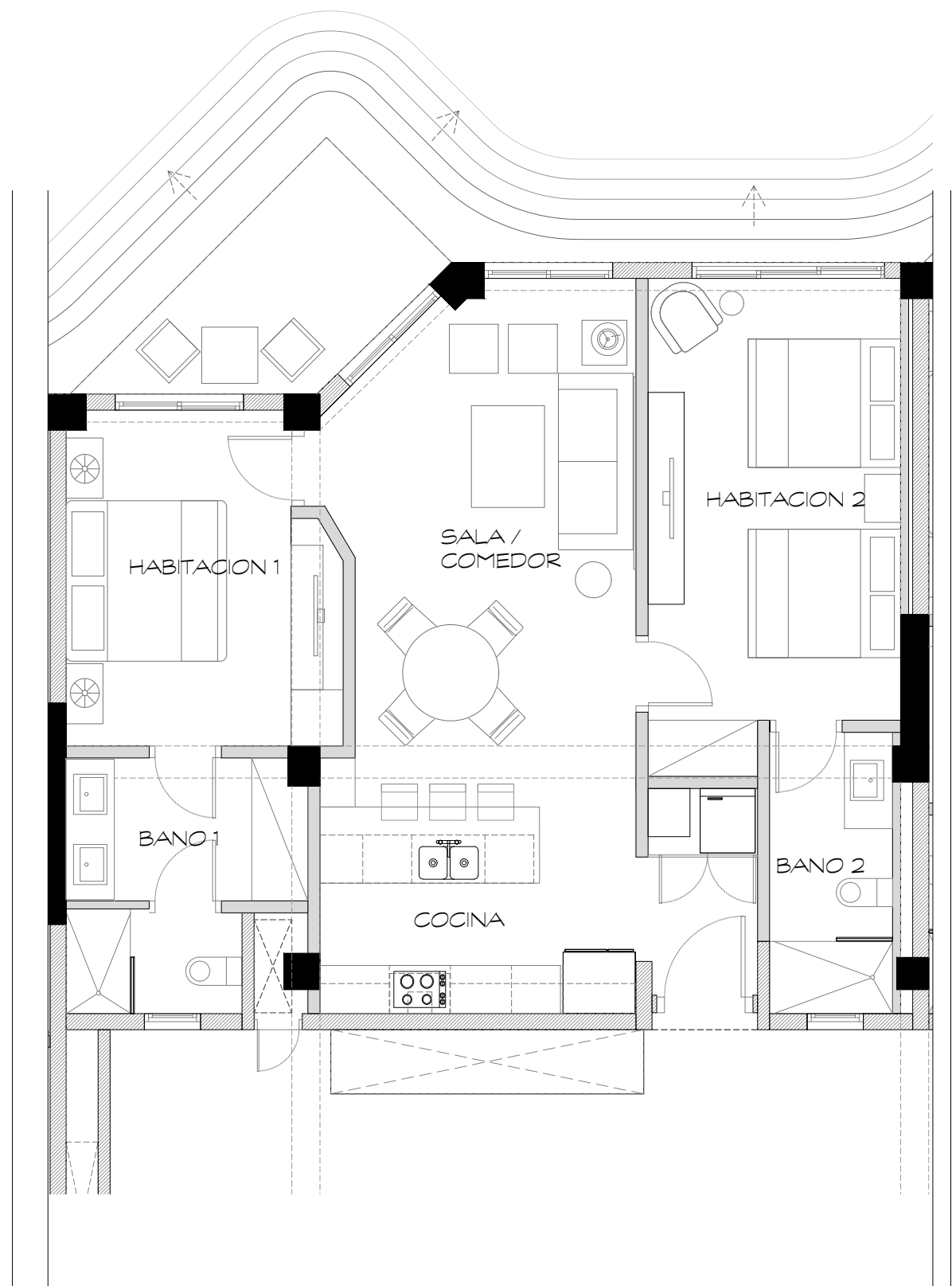
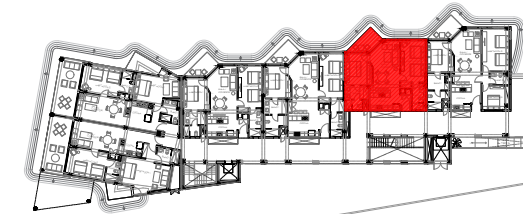
APARTAMENTO	118.90 M ²
BALCON	7.50 M ²
TOTAL	126.40 M ²

1 PLANTA APART 3101 y 3201
A-1 ESC 1:75



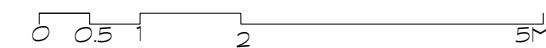
M & HARQUITECTOS <small>C/. PORFIRIO HERRERA # 21, PIA NTINI, SANTO DOMINGO, REP. DOM. TEL Y FAX: 809-620-204 EMAIL: MYHARQUITECTOS@GMAIL.COM</small>	CONSULTORES <small>CALCULOS ESTRUCTURALES INSTALACIONES SANITARIAS INSTALACIONES ELECTRICAS</small>	ARQUITECTOS <small>SARAH HERNANDEZ COD: 17465 RICARDO MARTINEZ COD: 17464</small>	INGENIERO	PROPIETARIO <small>COSON BAY</small>	FECHA <small>MAYO 2017</small>	REVISION	ESCALA <small>INDICADA</small>	DIBUJO <small>ARQ-00</small>	HOJA No. <small>1</small>
					CLAVE				
					ESCALA INDICADA				
					CLAVE				

COSON BAY 2017



METRAJE

APARTAMENTO	96.00 M ²
BALCON	7.50 M ²
TOTAL	103.50 M ²



1 PLANTA APART 3102 Y 3202
A-1 ESC 1:75

M & H ARQUITECTOS

C/. PORFIRIO HERRERA # 21, PIA NTINI, SANTO DOMINGO, REP. DOM.
TEL Y FAX: 809-620-204 EMAIL: MYHARQUITECTOS@GMAIL.COM

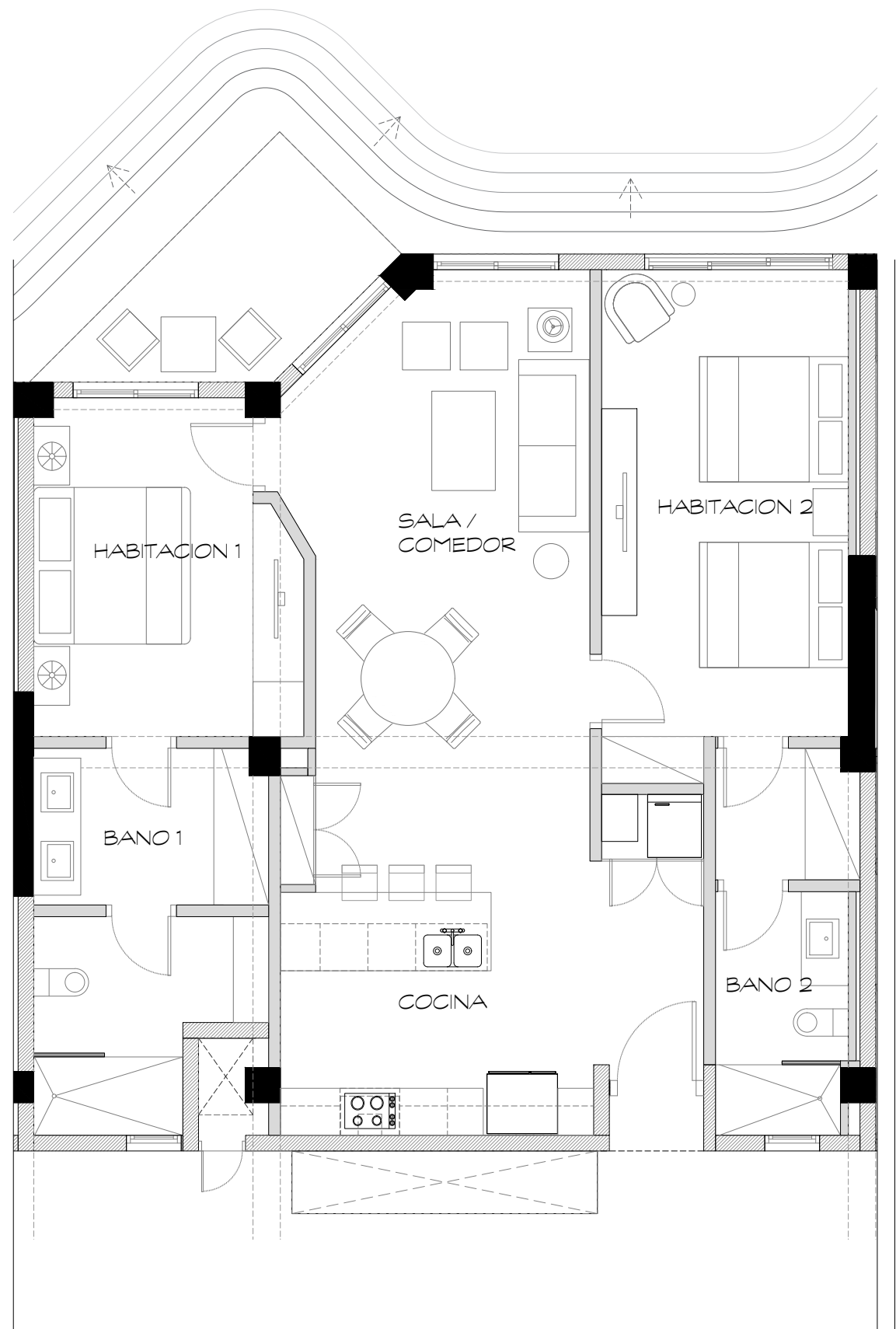
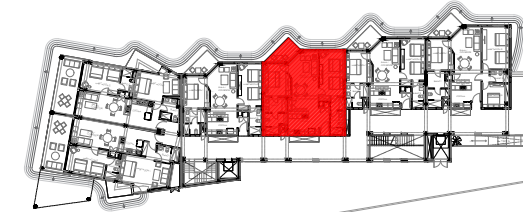
CONSULTORES
CALCULOS ESTRUCTURALES
INSTALACIONES SANITARIAS
INSTALACIONES ELECTRICAS

ARQUITECTOS
SARAH HERNANDEZ COD: 17465
RICARDO MARTINEZ COD: 17464
INGENIERO
PROPIETARIO
COSON BAY

FECHA
MAYO 2017
ESCALA
INDICADA
CLAVE

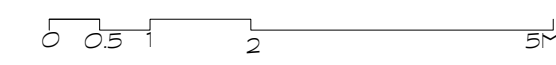
REVISION
DIBUJO
ARQ-00
HOJA No.
1

COSON BAY 2017

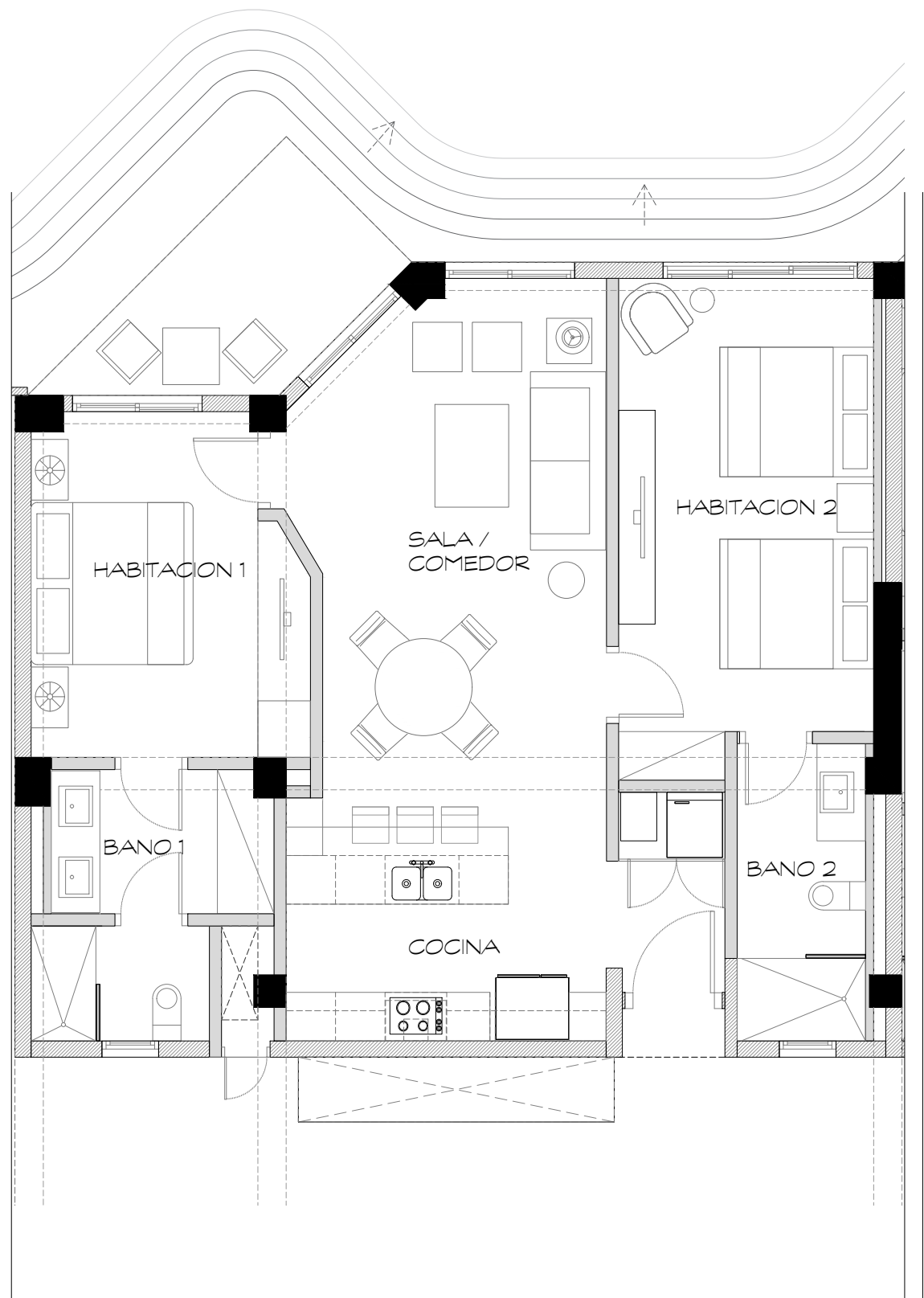
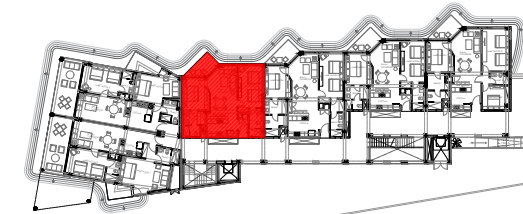


METRAJE

APARTAMENTO	116.50 M ²
BALCON	7.50 M ²
TOTAL	124.00 M ²



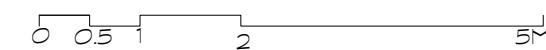
1 PLANTA APART 3103 Y 3203
A-1 ESC 1:75



METRAJE

APARTAMENTO	100.00 M ²
BALCON	7.50 M ²
TOTAL	107.50 M ²

1 PLANTA APART 3104 Y 3204
A-1 ESC 1.75



M & HARQUITECTOS

C/. PORFIRIO HERRERA # 21, PIA NTINI, SANTO DOMINGO, REP. DOM.
TEL Y FAX: 809-620-204 EMAIL: MYHARQUITECTOS@GMAIL.COM

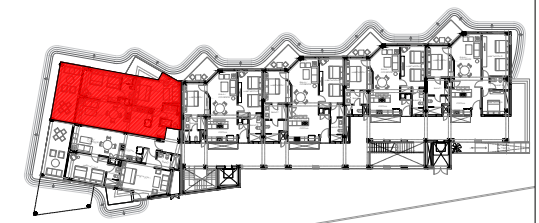
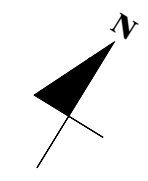
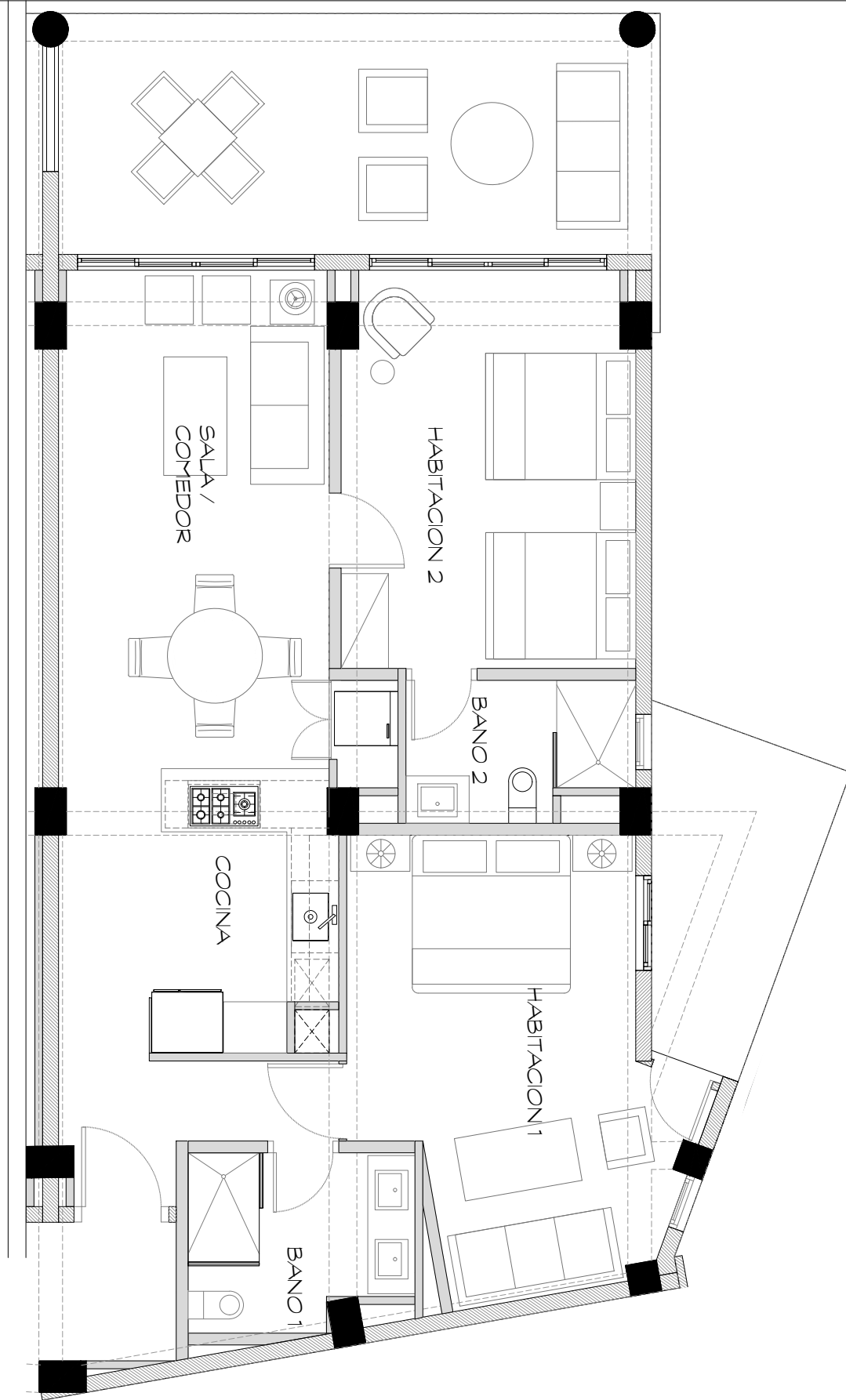
CONSULTORES
CALCULOS ESTRUCTURALES
INSTALACIONES SANITARIAS
INSTALACIONES ELECTRICAS

ARQUITECTOS
SARAH HERNANDEZ COD: 17465
RICARDO MARTINEZ COD: 17464
INGENIERO
PROPIETARIO
COSON BAY

FECHA
MAYO 2017
ESCALA
INDICADA
CLAVE

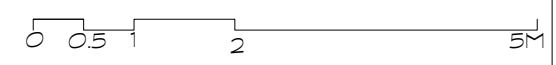
REVISION
DIBUJO
ARQ-00
HOJA No.
1

COSON BAY 2017



METRAJE

APARTAMENTO	103.60 M ²
TERRAZA	23.50 M ²
BALCON	8.00 M ²
TOTAL	135.10 M²



1
A-1 PLANTA APART 3105
ESC 1:75

M & H ARQUITECTOS

C/. PORFIRIO HERRERA # 21, PIA NTINI, SANTO DOMINGO, REP. DOM.
TEL Y FAX: 809-620-204 EMAIL: MYHARQUITECTOS@GMAIL.COM

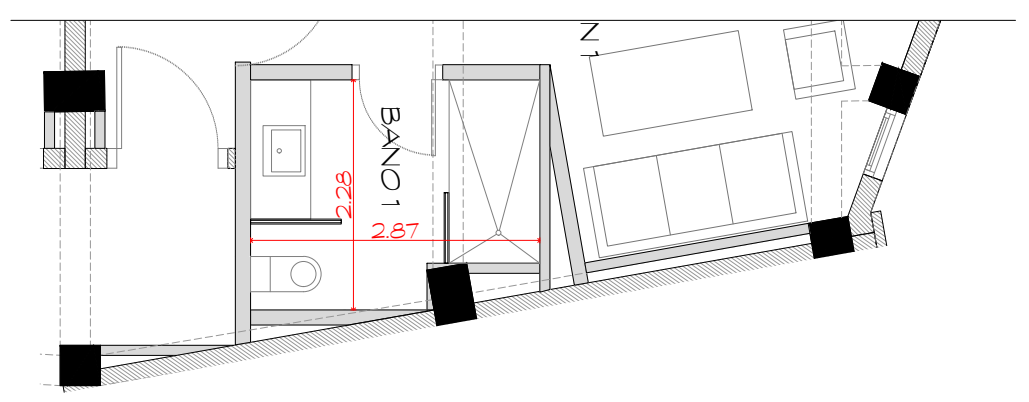
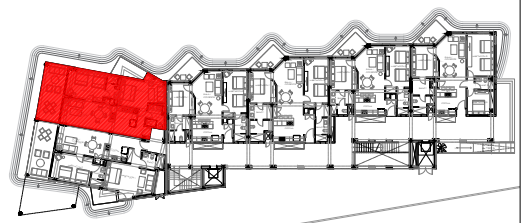
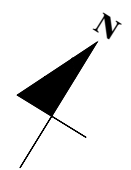
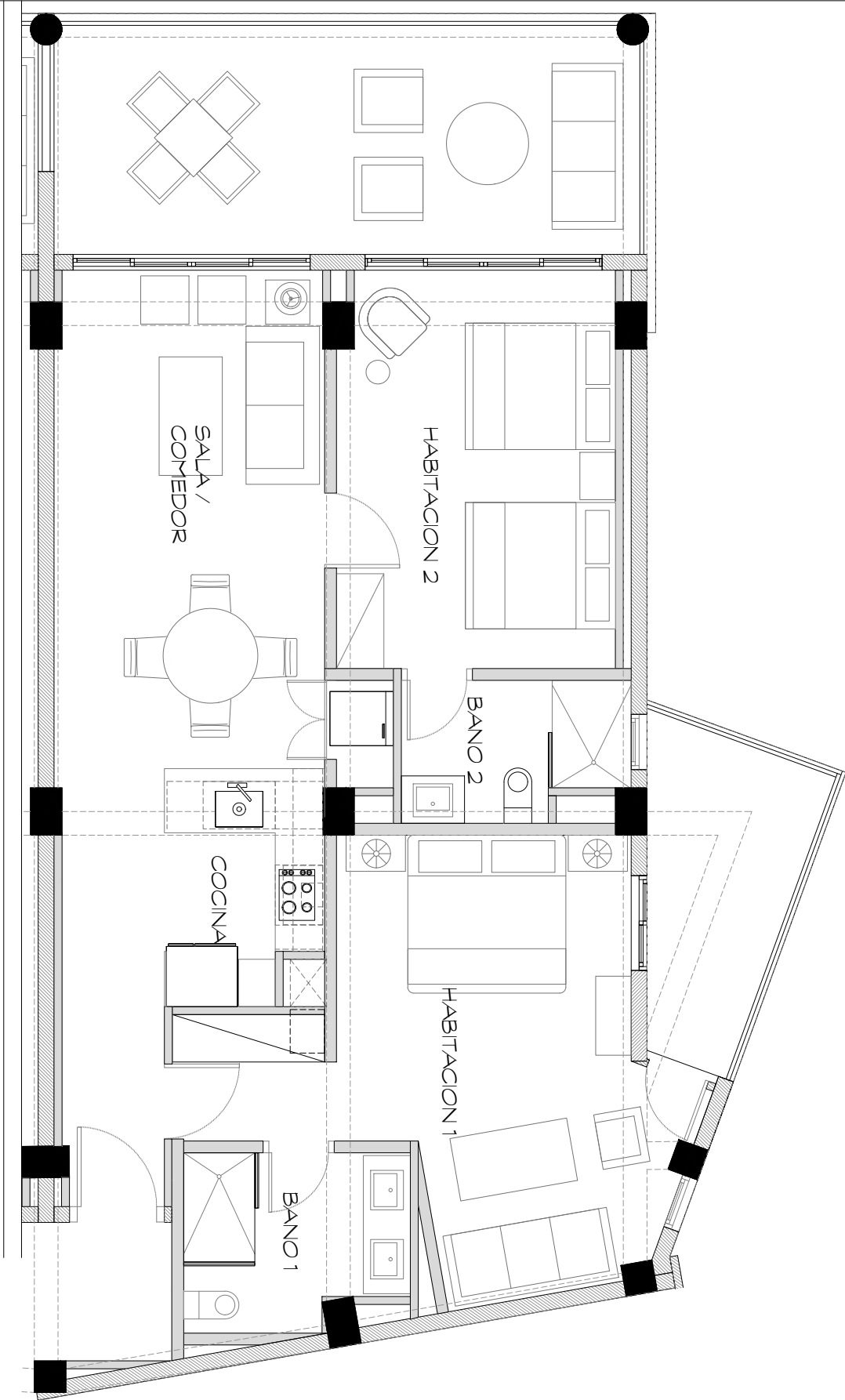
CONSULTORES
CALCULOS ESTRUCTURALES
INSTALACIONES SANITARIAS
INSTALACIONES ELECTRICAS

ARQUITECTOS
SARAH HERNANDEZ COD: 17465
RICARDO MARTINEZ COD: 17464
INGENIERO
PROPIETARIO
COSON BAY

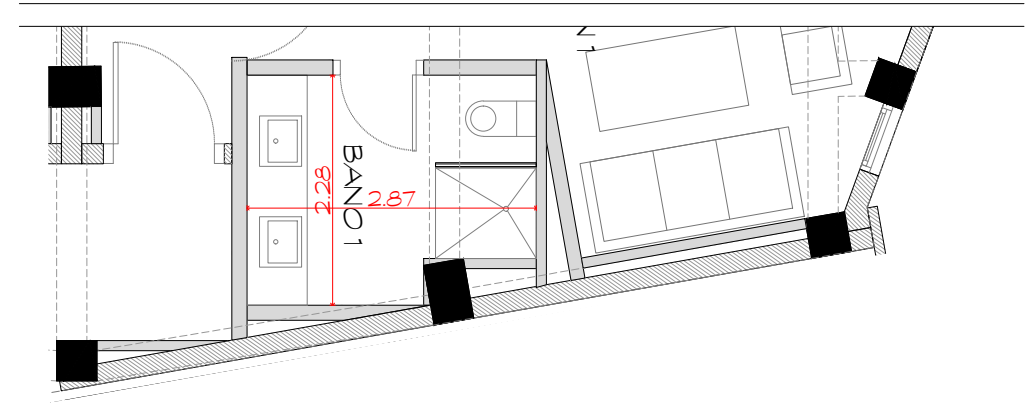
FECHA
MAYO 2017
ESCALA
INDICADA
CLAVE

REVISION
DIBUJO
ARQ-00
HOJA No.
1

COSON BAY 2017



1
A-1
PLANTA OPCION 2 BANO 1
ESC 1.75



1
A-1
PLANTA OPCION 3 BANO 1
ESC 1.75

METRAJE

APARTAMENTO	103.60 M ²
TERRAZA	23.50 M ²
BALCON	8.00 M ²
TOTAL	135.10 M²



1
A-1
PLANTA APART 3205
ESC 1.75

M & H ARQUITECTOS

C/. PORFIRIO HERRERA # 21, PIA NTINI, SANTO DOMINGO, REP. DOM.
TEL Y FAX: 809-620-204 EMAIL: MYHARQUITECTOS@GMAIL.COM

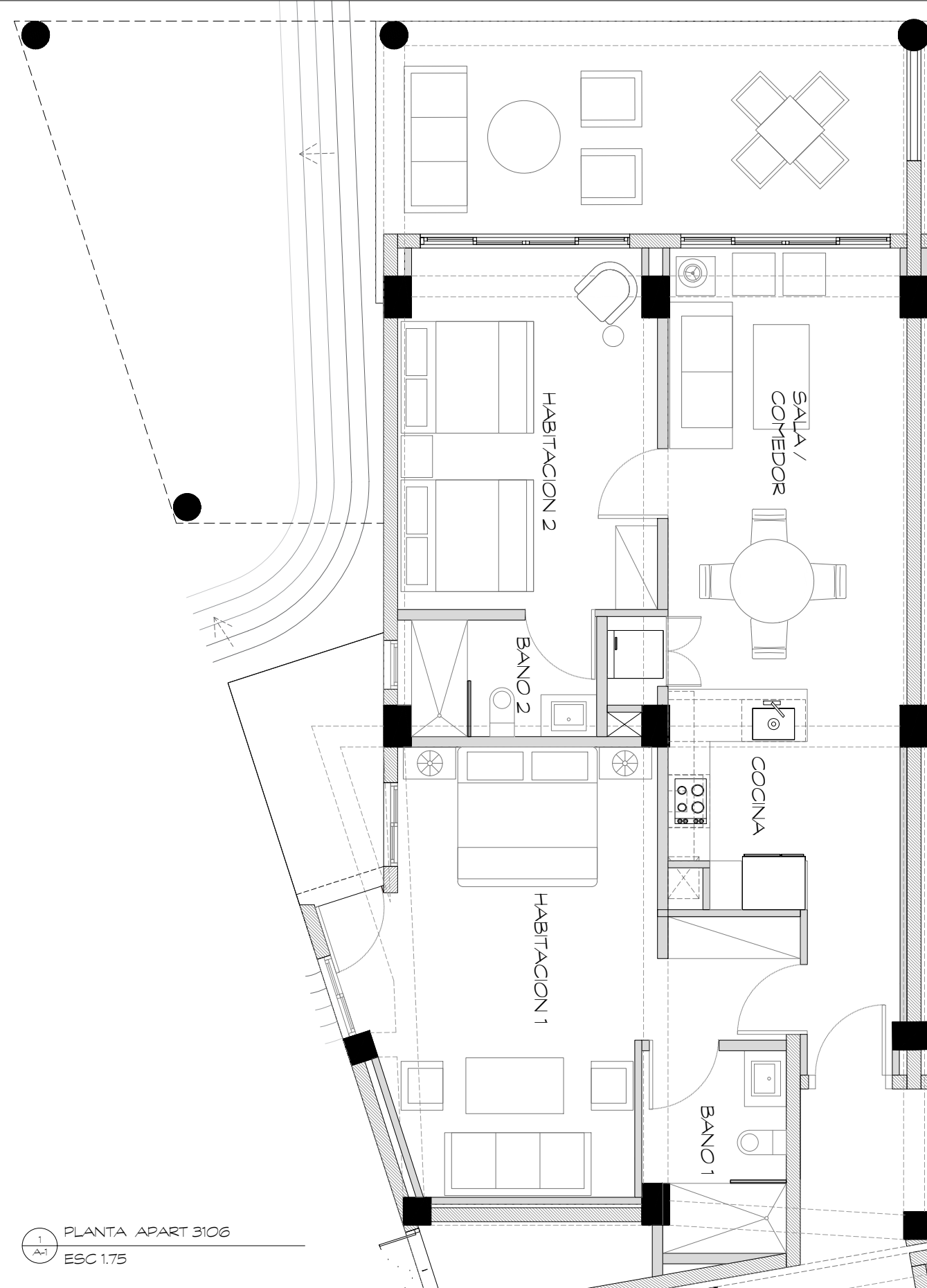
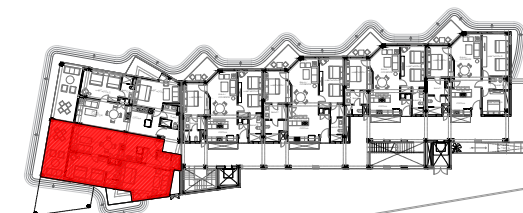
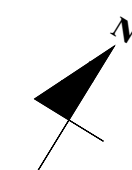
CONSULTORES
CALCULOS ESTRUCTURALES
INSTALACIONES SANITARIAS
INSTALACIONES ELECTRICAS

ARQUITECTOS
SARAH HERNANDEZ COD: 17465
RICARDO MARTINEZ COD: 17464
INGENIERO
PROPIETARIO
COSON BAY

FECHA
MAYO 2017
ESCALA
INDICADA
CLAVE

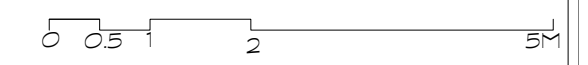
REVISION
DIBUJO
ARQ-00
HOJA No.
1

COSON BAY 2017



METRAJE

APARTAMENTO	108.00 M ²
BALCON	6.20 M ²
TERRAZA	24.00 M ²
TOTAL	138.20 M²



1 PLANTA APART 3106
A-1 ESC 1:75

M & H ARQUITECTOS

C/. PORFIRIO HERRERA # 21, PIA NTINI, SANTO DOMINGO, REP. DOM.
TEL Y FAX: 809-620-204 EMAIL: MYHARQUITECTOS@GMAIL.COM

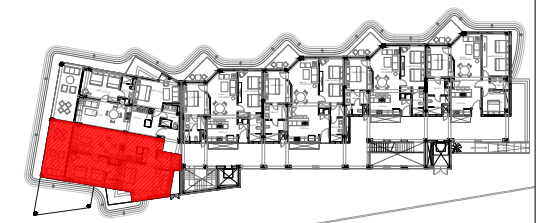
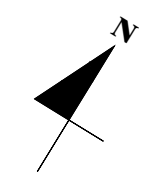
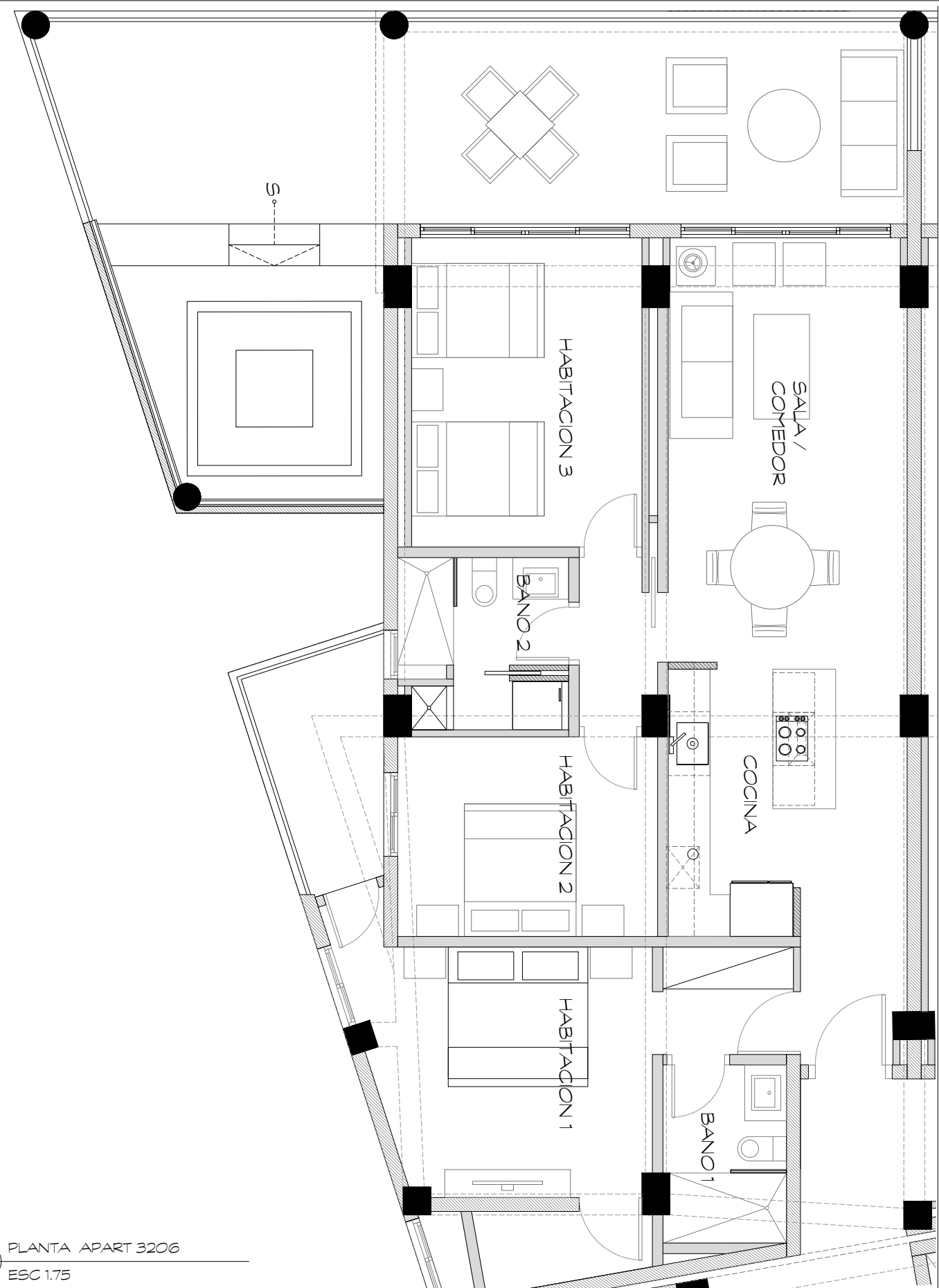
CONSULTORES
CALCULOS ESTRUCTURALES
INSTALACIONES SANITARIAS
INSTALACIONES ELECTRICAS

ARQUITECTOS
SARAH HERNANDEZ COD: 17465
RICARDO MARTINEZ COD: 17464
INGENIERO
PROPIETARIO
COSON BAY

FECHA
MAYO 2017
ESCALA
INDICADA
CLAVE

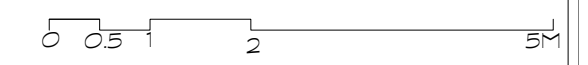
REVISION
DIBUJO
ARQ-00
HOJA No.
1

COSON BAY 2018 - APART 3-106 B



METRAJE

APARTAMENTO	112.70	M ²
BALCON	6.20	M ²
TERRAZA	52.70	M ²
TOTAL	171.60	M²



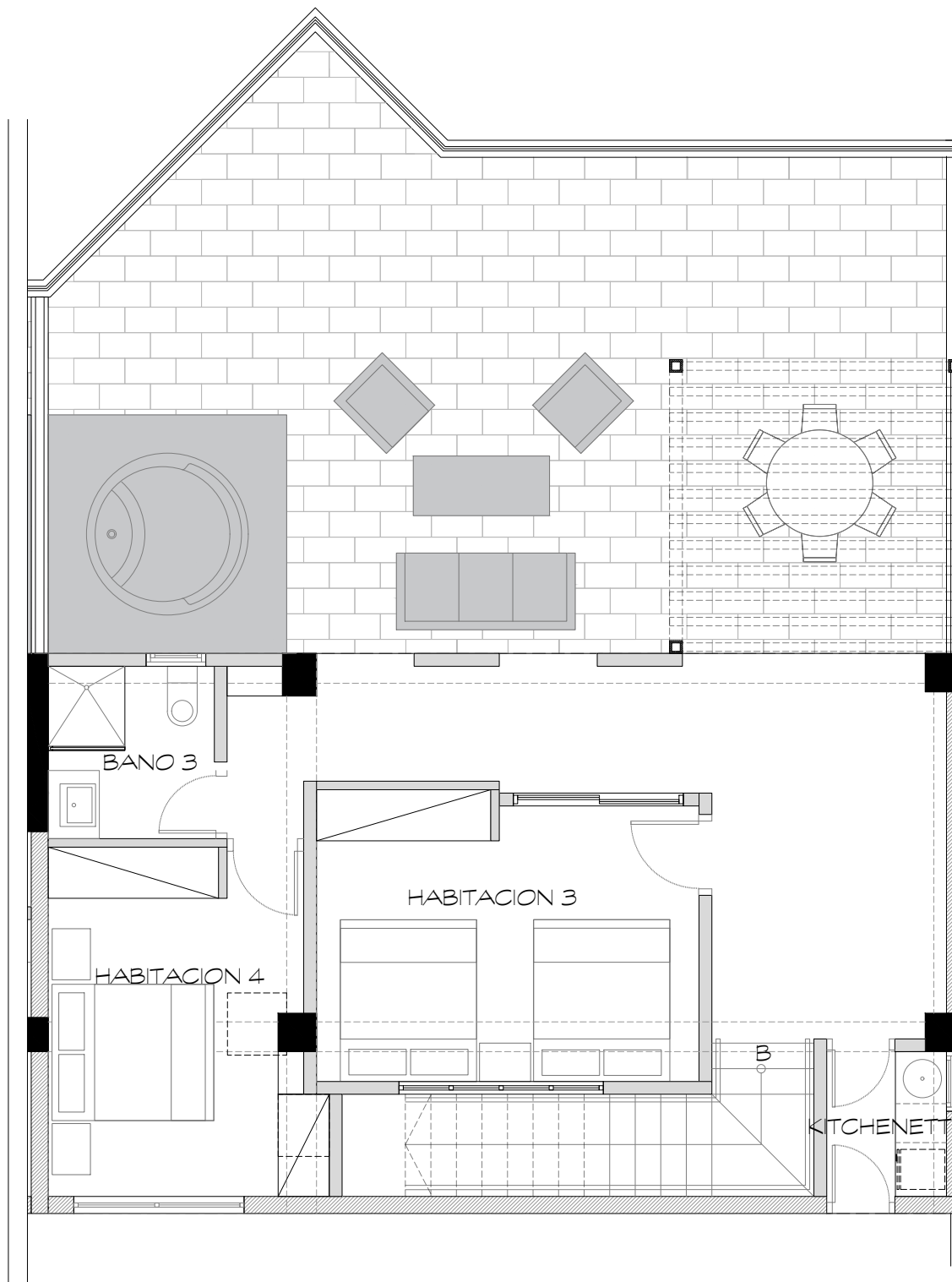
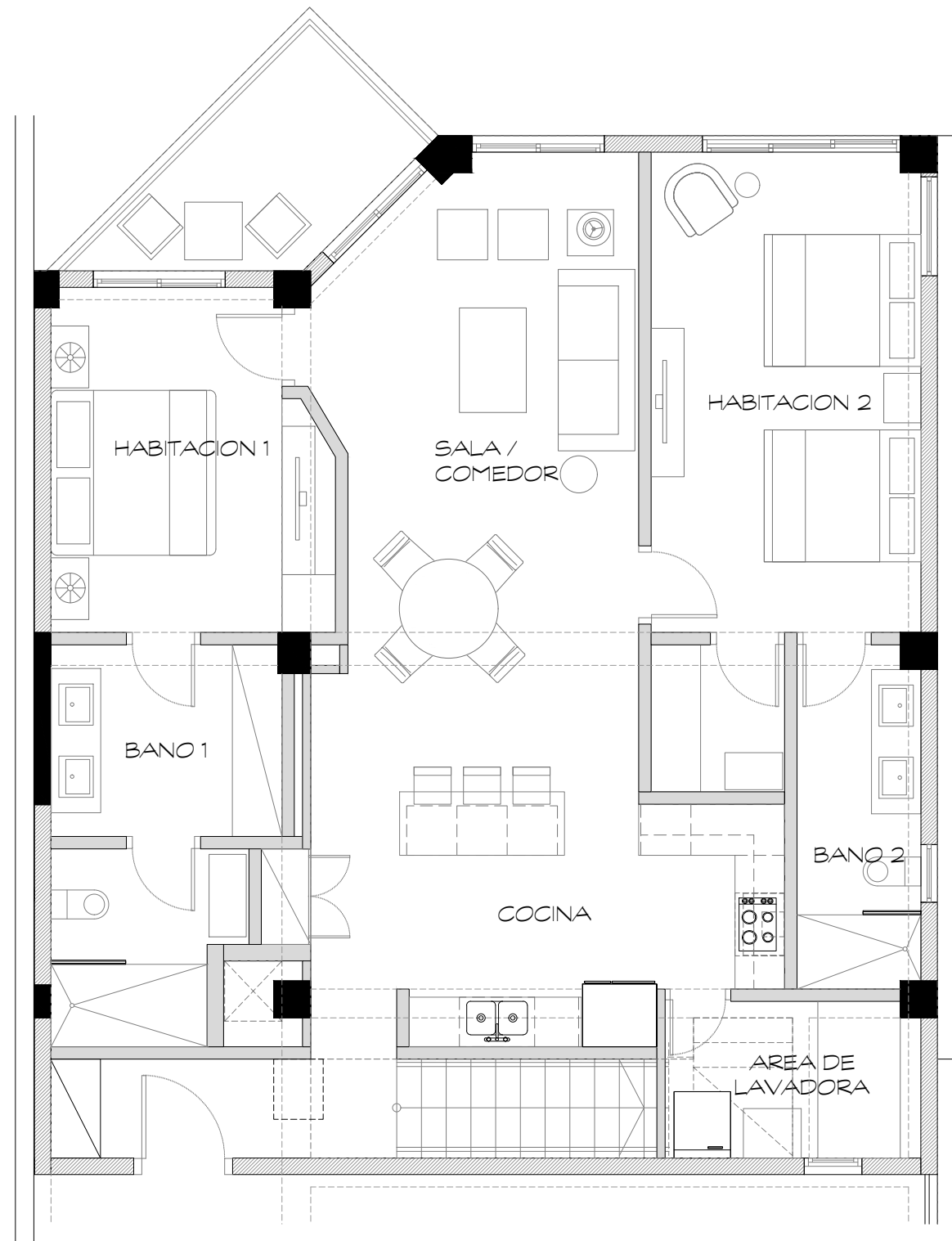
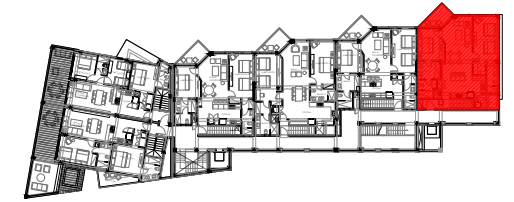
1
A-1 PLANTA APART 3206
ESC 1:75

M & H ARQUITECTOS

C/. PORFIRIO HERRERA # 21, PIA NTINI, SANTO DOMINGO, REP. DOM.
TEL Y FAX: 809-620-204 EMAIL: MYHARQUITECTOS@GMAIL.COM

CONSULTORES	ARQUITECTOS	FECHA	REVISION
CALCULOS ESTRUCTURALES	SARAH HERNANDEZ COD: 17465	MAYO 2017	
INSTALACIONES SANITARIAS	RICARDO MARTINEZ COD: 17464		DIBUJO ARQ-00
INSTALACIONES ELECTRICAS	INGENIERO	ESCALA INDICADA	HOJA No. 1
	PROPIETARIO	CLAVE	
	COSON BAY		

COSON BAY 2018 - APART 3-106 A



METRAJE

1 NIVEL APART	130.00 M ²
APARTAMENTO	
BALCON	7.50 M ²
TOTAL	137.50 M ²
2 NIVEL APART	7.00 M ²
APARTAMENTO	
PERGOLA	12.00 M ²
TERRAZA	54.50 M ²
TOTAL	137.50 M ²

1 PLANTA APART 3301
A-1 ESC 1:75

0 0.5 1 2 5M

M & H ARQUITECTOS

C/. PORFIRIO HERRERA # 21, PIA NTINI, SANTO DOMINGO, REP. DOM.
TEL Y FAX: 809-620-204 EMAIL: MYHARQUITECTOS@GMAIL.COM

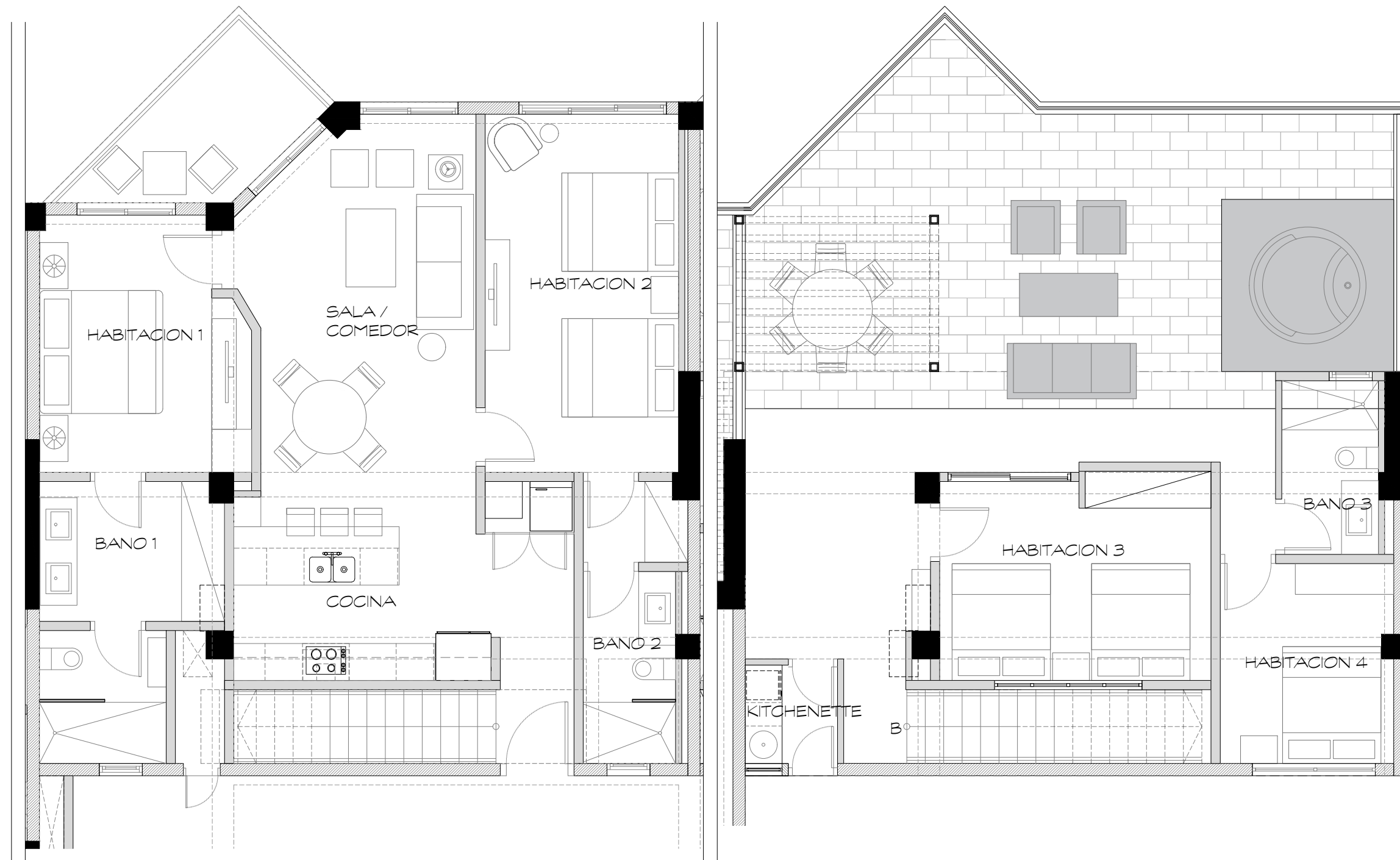
CONSULTORES
CALCULOS ESTRUCTURALES
INSTALACIONES SANITARIAS
INSTALACIONES ELECTRICAS

ARQUITECTOS
SARAH HERNANDEZ COD: 17465
RICARDO MARTINEZ COD: 17464
INGENIERO
PROPIETARIO
COSON BAY

FECHA
MAYO 2017
ESCALA
INDICADA
CLAVE

REVISION
DIBUJO
ARQ-00
HOJA No.
1

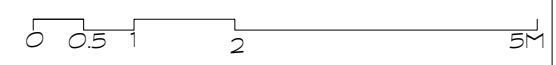
COSON BAY 2017

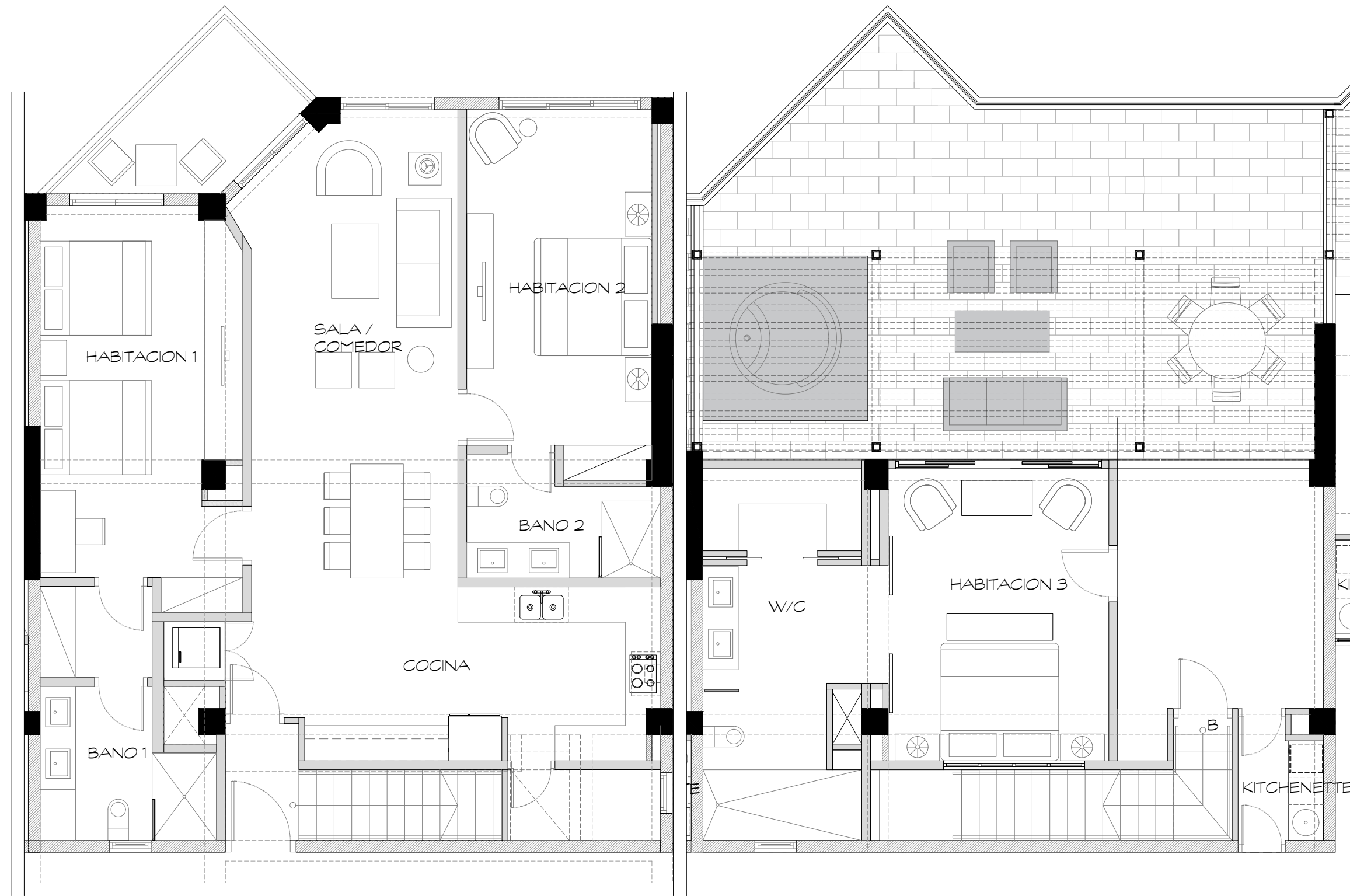
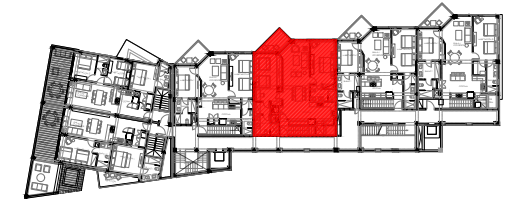


METRAJE

1 NIVEL APART	111.00 M ²
APARTAMENTO	7.50 M ²
BALCON	
TOTAL	118.50 M ²
2 NIVEL APART	65.00 M ²
APARTAMENTO	
PERGOLA	8.00 M ²
TERRAZA	45.50 M ²
TOTAL	118.50 M ²

1 PLANTA APART 3302
A-1 ESC 1:75





METRAJE	
1 NIVEL APART	131.50 M ²
APARTAMENTO	7.50 M ²
BALCON	
TOTAL	139.00 M ²
2 NIVEL APART	73.50 M ²
APARTAMENTO	36.50 M ²
PERGOLA	29.00 M ²
TERRAZA	
TOTAL	139.00 M ²

1 PLANTA APART 3303
A-1 ESC 1.75

M & H ARQUITECTOS

C/. PORFIRIO HERRERA # 21, PIA NTINI, SANTO DOMINGO, REP. DOM.
TEL Y FAX: 809-620-204 EMAIL: MYHARQUITECTOS@GMAIL.COM

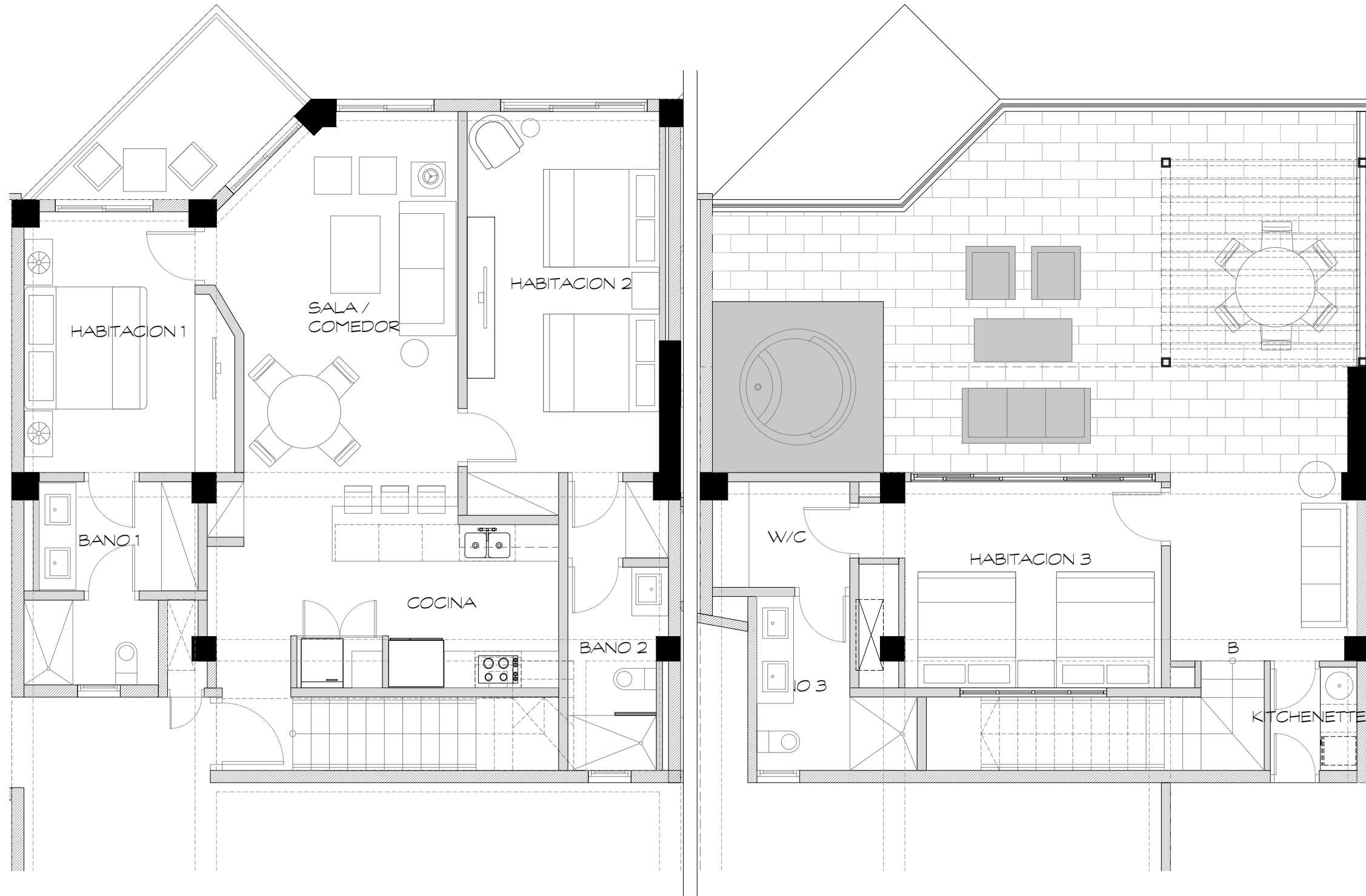
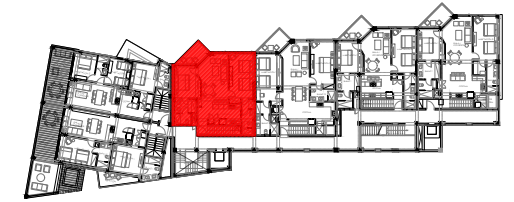
CONSULTORES
CALCULOS ESTRUCTURALES
INSTALACIONES SANITARIAS
INSTALACIONES ELECTRICAS

ARQUITECTOS
SARAH HERNANDEZ COD: 17465
RICARDO MARTINEZ COD: 17464
INGENIERO
PROPIETARIO
COSON BAY

FECHA
MAYO 2017
ESCALA
INDICADA
CLAVE

REVISION
DIBUJO
ARQ-00
HOJA No.
1

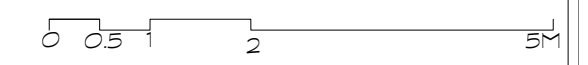
COSON BAY 2017

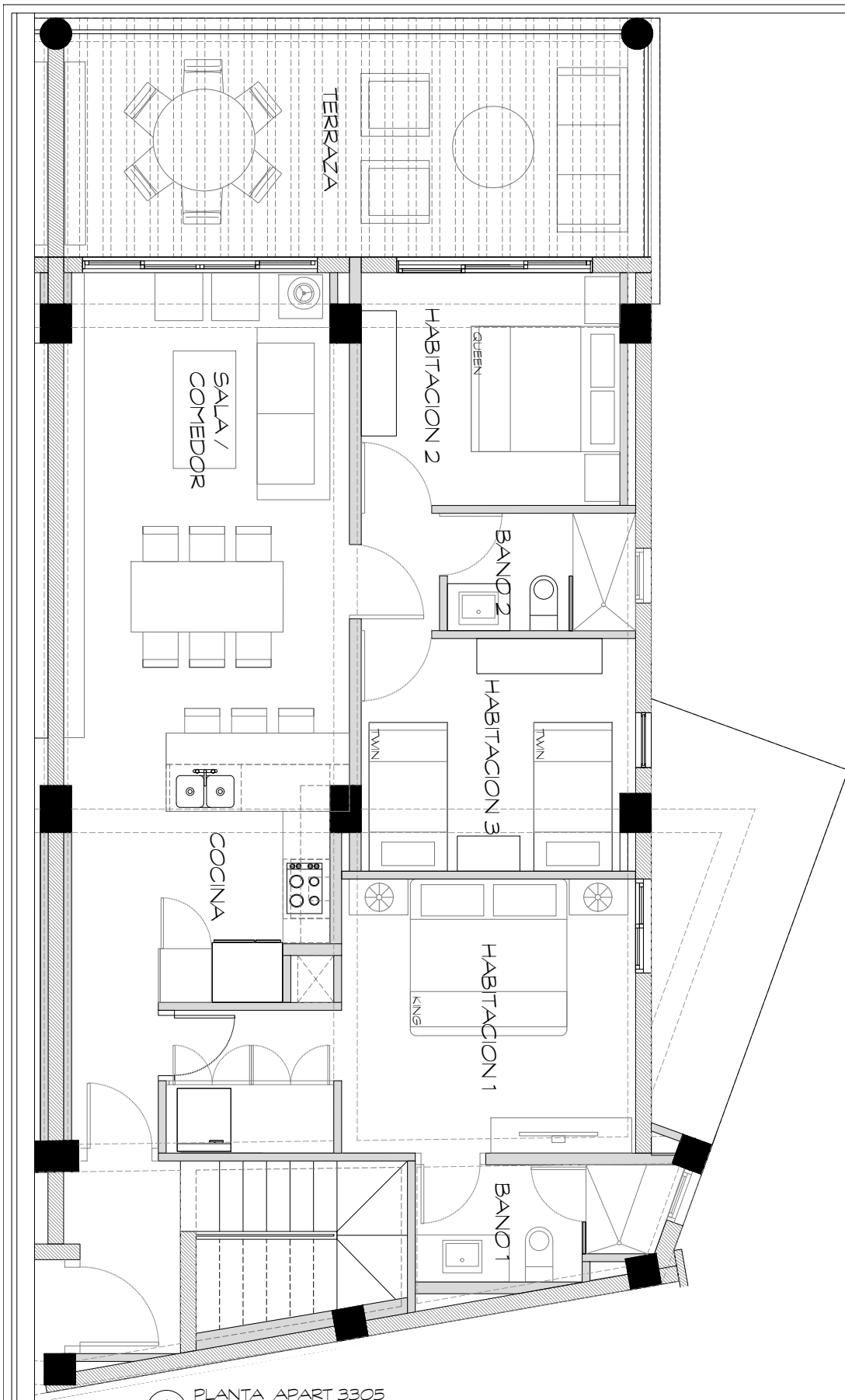


METRAJE

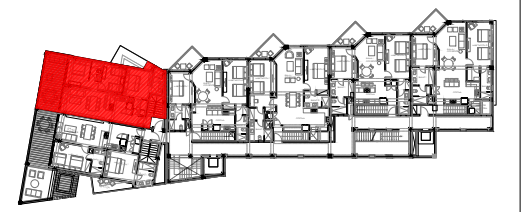
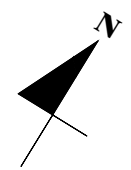
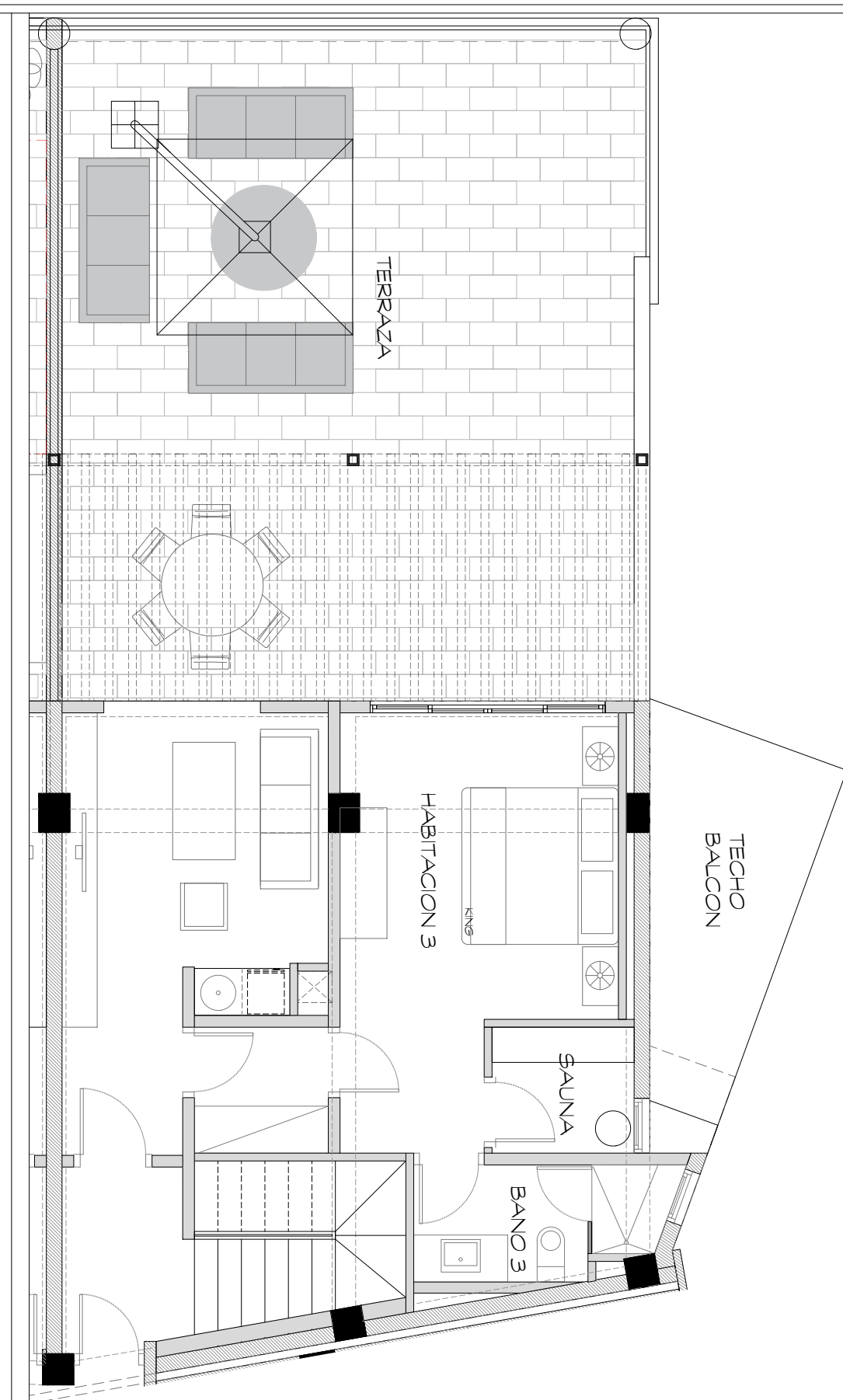
1 NIVEL APART	
APARTAMENTO	108.50 M ²
BALCON	7.50 M ²
TOTAL	116.00 M ²
2 NIVEL APART	
APARTAMENTO	71.50 M ²
PERGOLA	11.00 M ²
TERRAZA	29.50 M ²
TOTAL	112.00 M ²

1 PLANTA APART 3304
A-1 ESC 1:75



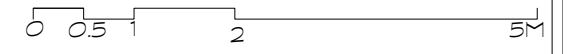


1 PLANTA APART 3305
A-1 ESC 1.75



METRAJE

1 NIVEL DE APART.	
APARTAMENTO	105.50 M ²
TERRAZA	23.50 M ²
BALCON	8.50 M ²
TOTAL	137.50 M²
2 NIVEL DE APART.	
APARTAMENTO	62.00 M ²
PERGOLA	24.00 M ²
TERRAZA	42.50 M ²
TOTAL	128.50 M²



M & H ARQUITECTOS

C/. PORFIRIO HERRERA # 21, PIA NTINI, SANTO DOMINGO, REP. DOM.
TEL Y FAX: 809-620-204 EMAIL: MYHARQUITECTOS@GMAIL.COM

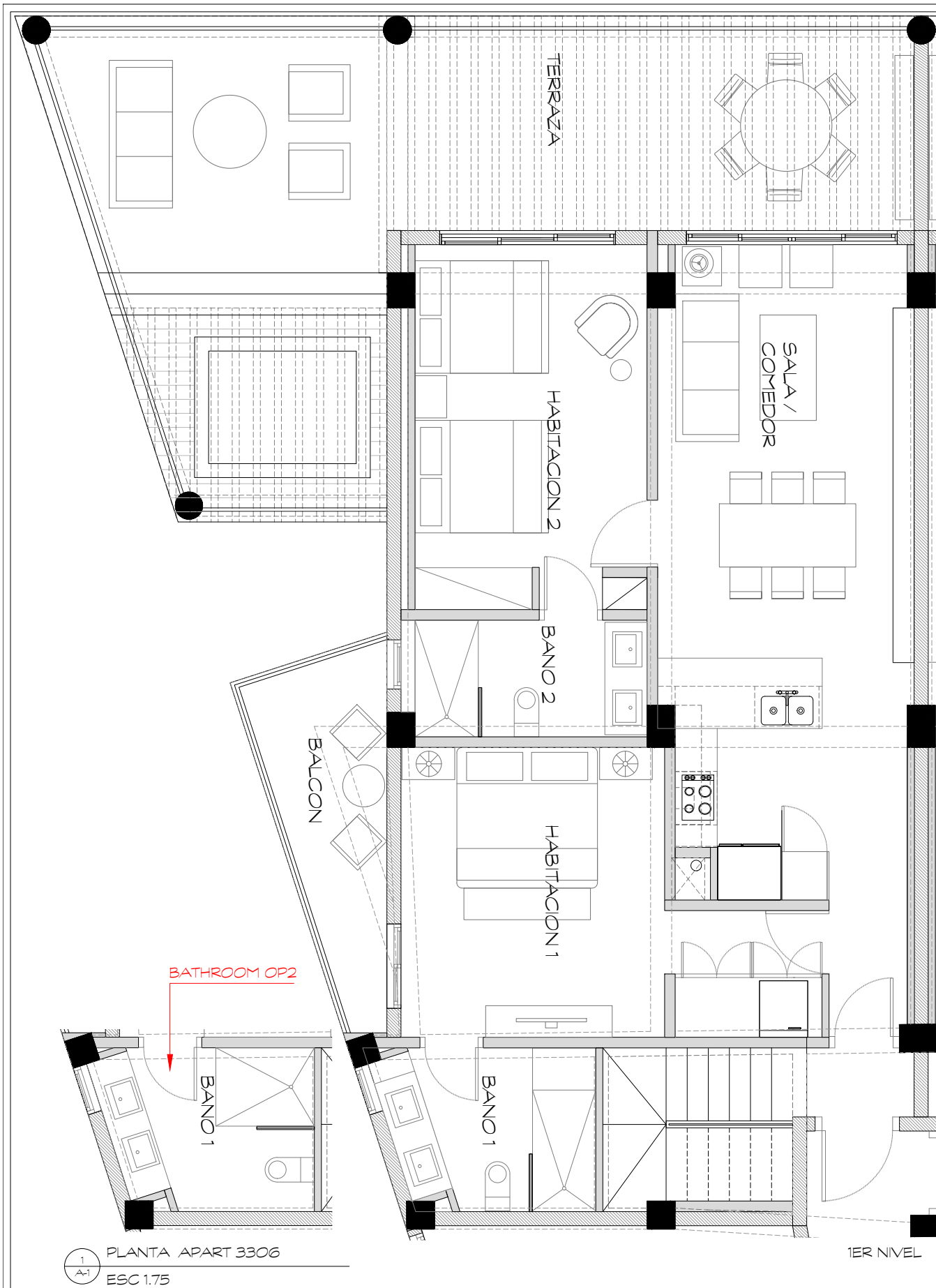
CONSULTORES
CALCULOS ESTRUCTURALES
INSTALACIONES SANITARIAS
INSTALACIONES ELECTRICAS

ARQUITECTOS
SARA HERNANDEZ COD: 17465
RICARDO MARTINEZ COD: 17464
INGENIERO
PROPIETARIO
COSON BAY

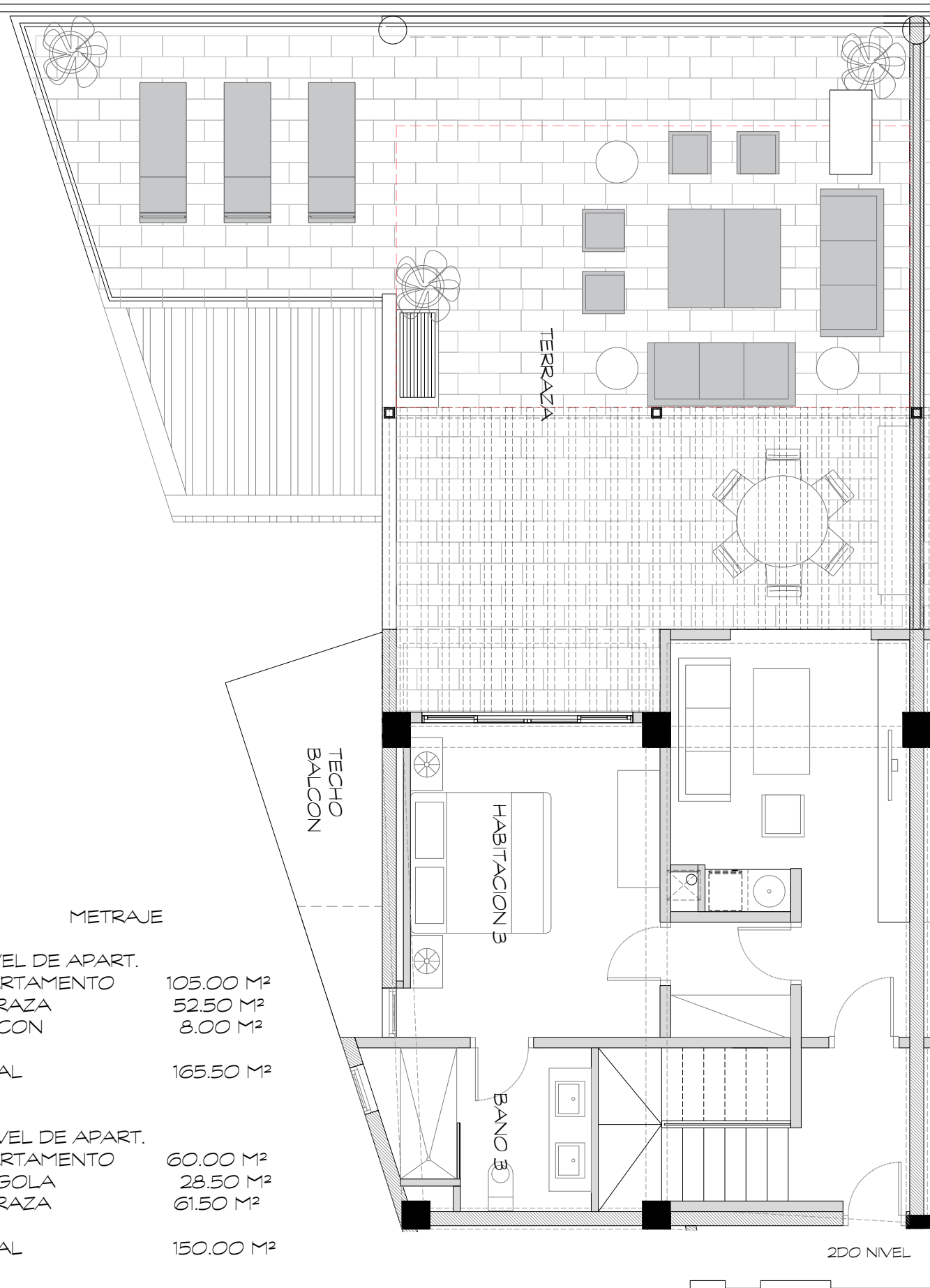
FECHA
MAYO 2017
ESCALA
INDICADA
CLAVE

REVISION
DIBUJO
ARQ-00
HOJA No.
1

COSON BAY 2017



PLANTA APART 3306
ESC 1.75



METRAJE

1 NIVEL DE APART. APARTAMENTO	105.00 M ²
TERRAZA	52.50 M ²
BALCON	8.00 M ²
TOTAL	165.50 M²
2 NIVEL DE APART. APARTAMENTO	60.00 M ²
PERGOLA	28.50 M ²
TERRAZA	61.50 M ²
TOTAL	150.00 M²

0 0.5 1 2 5M

M & HARQUITECTOS

C/. PORFIRIO HERRERA # 21, PIA NTINI, SANTO DOMINGO, REP. DOM.
TEL Y FAX: 809-620-204 EMAIL: MYHARQUITECTOS@GMAIL.COM

CONSULTORES
CALCULOS ESTRUCTURALES
INSTALACIONES SANITARIAS
INSTALACIONES ELECTRICAS

ARQUITECTOS
SARA HERNANDEZ COD: 17465
RICARDO MARTINEZ COD: 17464
INGENIERO
PROPIETARIO
COSON BAY

FECHA
MAYO 2017
ESCALA
INDICADA
CLAVE

REVISION
DIBUJO
ARQ-00
HOJA No.
1

COSON BAY 2017